

## AT A GLANCE

Foresight Group, a leading, sustainability-led infrastructure and private equity manager.

We've been backing innovation that drives progress and supporting ambitious, entrepreneurial SMEs across different sectors since 1984.

We understand the role sustainable investing can play in evolving established markets, creating new ones and generating long-term value and impact.

**200+**

INSTITUTIONAL CLIENTS

**21**

INSTITUTIONAL SOLUTIONS

**59%**

INSTITUTIONAL AUM

**c.29,000<sup>1</sup>**

RETAIL INVESTORS

**16<sup>2</sup>**

RETAIL SOLUTIONS

**41%**

RETAIL AUM

1. This may include investors with more than one investment.

2. Retail funds include FSFL, JLEN and FSFC which are majority held by institutional investors but also available to retail investors.



# Our businesses

**INFRASTRUCTURE**

**£6.3bn**

**AUM 71%**  
(FY21: £5.4bn)

**337**

**Assets**  
(FY21: 317)

- Highlights**
- FEIP reached final close, raising a total of €851.4 million across FY21 and FY22, 70% ahead of target
  - IPO of Foresight Sustainable Forestry Company, raised £130 million - the first UK natural capital-focused investment trust listed on the main market of the London Stock Exchange



**PRIVATE EQUITY**

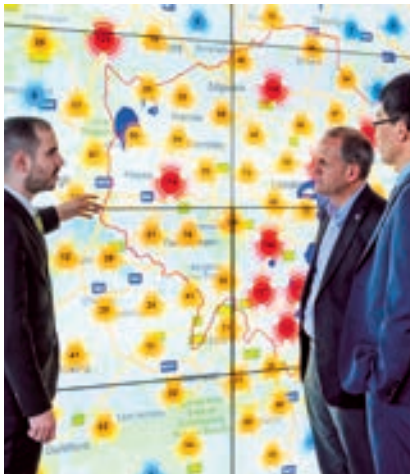
**£930m**

**AUM 11%**  
(FY21: £714m)

**131**

**Portfolio Companies**  
(FY21: 115)

- Highlights**
- First close of FRIF III cornerstoned by Greater Manchester Pension Fund, raised £65 million, increasing to £83 million post period end with a successful second close
  - Performance of FRIF I exceeded expectations, generating a cash return of 1.8x after three exits with 14 portfolio companies remaining



**FORESIGHT CAPITAL MANAGEMENT ("FCM")**

**£1.6bn**

**AUM 18%**  
(FY21: £1.1bn)

**6**

**Investment vehicles**  
(FY21: 3)

- Highlights**
- Significant expansion of FCM offering:
    - VAM Global Listed Infrastructure, a sub-advisory mandate
    - GRIF Lux to access European capital and distribution networks
    - New investment strategy launched with the Foresight Sustainable Future Themes Fund

